



# Cummins Transforms Global Safety with Anvl

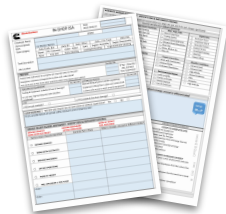
"Anvl has increased the quality of communications between technicians, managers, and HSE Leaders, reducing incident severity. Anvl also gives us data and insights to uncover multi-level leading indicators, allowing us to take a proactive stance within safety."

– Chris Shieldsmith, HSE Global Leader



## The Problem

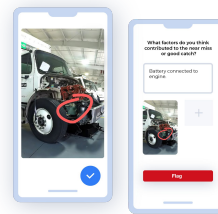
Before Anvl, Cummins relied on complex paper forms for Job Safety Assessments (JSA) when repairing & maintaining engines of all makes, models, and years.



Paper JSAs were easy to pencil-whip, and leadership could not track compliance nor make decisions without hundreds of hours of manual data entry that is prone to human error.

Cummins needed a new system to promote safety, improve efficiency, and drive proactive safety change.

## The Solution



Cummins leverages Anvl's mobile app to design smart workflows that guide technicians through safety questions only relevant to their task and include photos, text, diagrams, and eSignatures.

Globally, Cummins sees 90% adoption across more than 5,000 employees and regularly receives ideas from supervisors for additional use cases for Anvl.

Leaders now view real-time data in Anvl to ensure compliance and make data-driven safety decisions.

## The Results

### Continuous Improvement

Anvl has identified opportunities for safety and productivity improvements previously unknown in nearly 20% of JSAs. These include ensuring PPE availability, training requirements, and safe usage of electrical procedures.

### Actionable Metrics & Analytics

Cummins technicians complete 500K+ digital JSAs yearly, translating to over 30 million data points. Using Anvl's advanced analytics, Cummins now proactively makes decisions based on leading indicators, not lagging ones.

### Manager Empowerment

Cummins identifies focus areas using Anvl's proprietary Strength Score to measure the quality of JSAs. Since its adoption, Anvl has delivered opportunities to improve RIRs, SIFs, PSIFs, OSHA compliance, and insurance costs.

### ½ Ton of Paper Saved Annually

Anvl helps Cummins hit ESG goals by eliminating paper use, removing unnecessary travel, and identifying equipment malfunctions early. By 2050, Cummins will prevent the equal weight of 10 QSK95 engines from entering landfills.